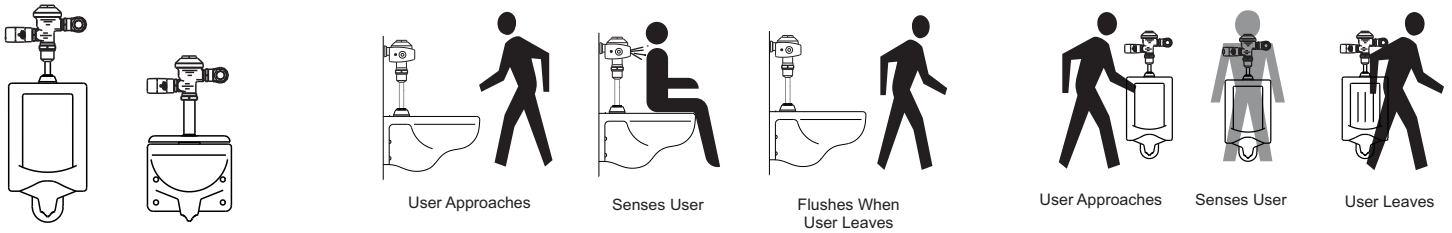




# HSM-801FG Series

# FLUSH GENIE® SIDEMOUNT for Urinals and Toilets Installation and Operation Manual

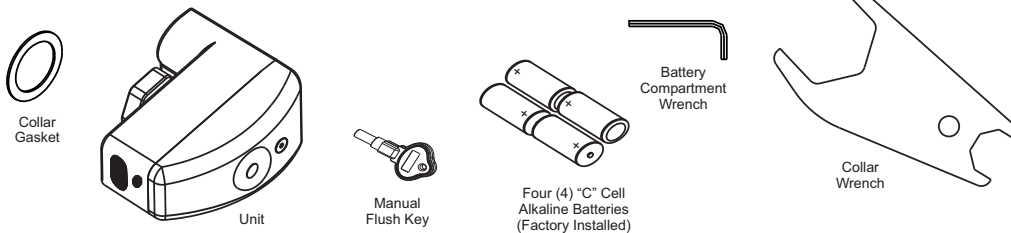


The FLUSH GENIE® is a fully programmable automatic flush control device for urinals and toilets. The smart design allows the device to be switched between sensor activated mode and timer controlled mode.

When in **SENSOR** activated mode, the unit sends out an infrared beam that senses a user on a urinal or toilet. Once the user walks away from the fixture the unit triggers the fixture to flush automatically. The unit includes an electronic push button to allow for a manual courtesy flush option.

When in **TIMER** controlled mode, the unit converts most urinals into water efficient fixtures by controlling the amount of daily flushes. The flush intervals can be programmed to flush once every 30 minutes, 1, 2, or 3 hours. The unit will go to **SLEEP** if a user is **NOT** detected within 135 minutes since the last use to prevent flush activation while the facility is closed. A mechanical manual flush override using the provided **MANUAL FLUSH KEY** will allow the custodial staff (not the user) to flush the unit manually at any time (NOTE: electronic push button is deactivated in **TIMER** mode).

## 1 Components



## 2 Installation

**Pre-Installation Note:**  
Although not necessary, it is recommended to shut off water supply at stop.

**A** Using the supplied collar wrench, loosen handle from flush valve.

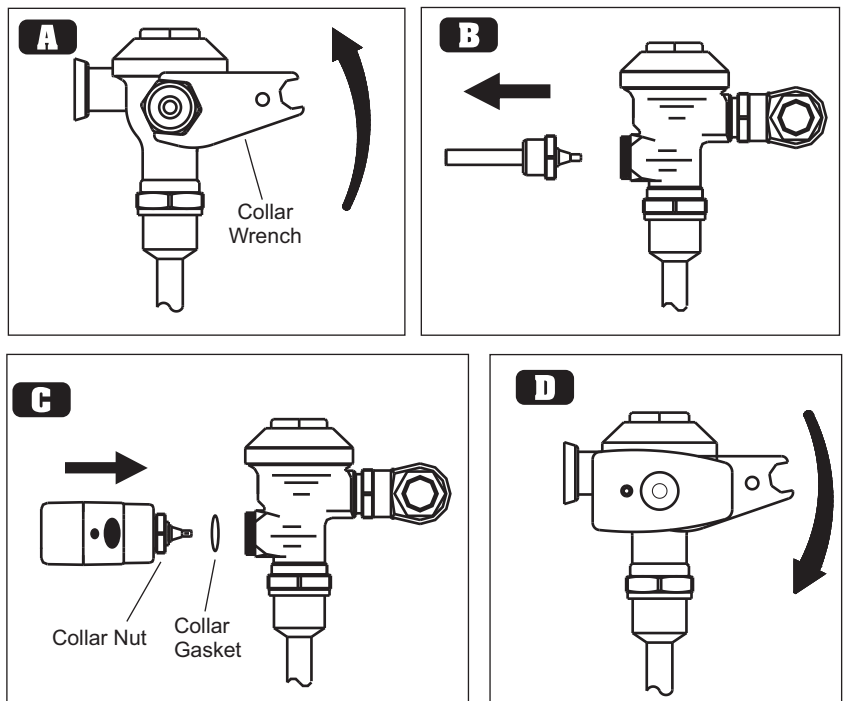
**B** Remove handle from flush valve.

**Note:** A small amount of water may drip out while removing handle so be prepared to collect it with a rag or towel.

**C** Place collar gasket into collar nut and attach the Flush Genie® unit where the handle was removed.

**D** Tighten collar nut using the supplied collar wrench.

**Note:** Save removed handle in case you need to reuse for service of Flush Genie® unit.

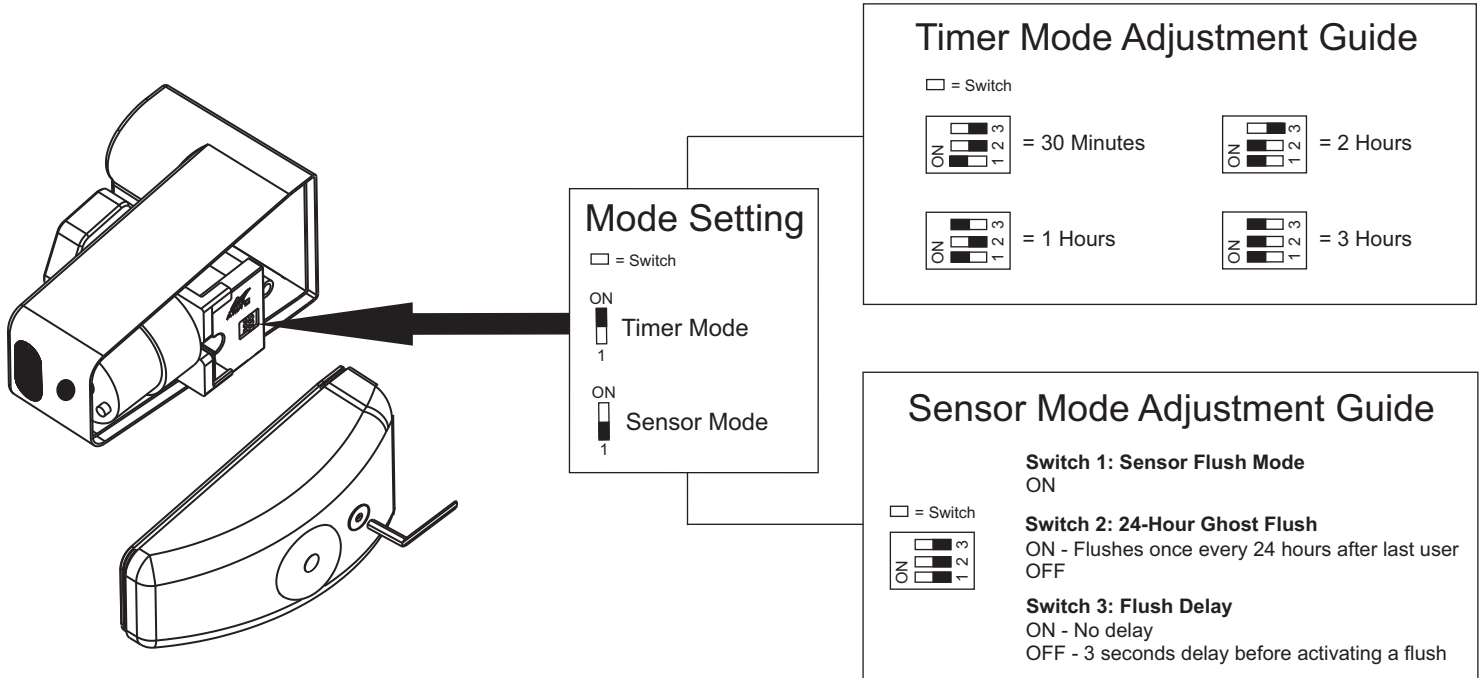


# 3 Adjusting Modes of Operation

The unit includes two (2) different modes of operation. **Timer Mode** and **Sensor Mode**. Remove side cover using battery compartment wrench and refer to the "Mode Adjustment Guide" for switch settings (see diagrams below).

In **TIMER Mode**, the unit converts most urinals into water efficient fixtures by controlling the amount of daily flushes. The flush intervals can be programmed to flush once every 30 minutes, 1, 2, or 3 hours. The unit will go to **SLEEP** if a user is **NOT** detected within 135 minutes since the last use to prevent flush activation while the facility is closed. A mechanical manual flush override using the provided **MANUAL FLUSH KEY** will allow the custodial staff (not the user) to flush the unit manually at any time (NOTE: electronic push button is deactivated in **TIMER** mode).

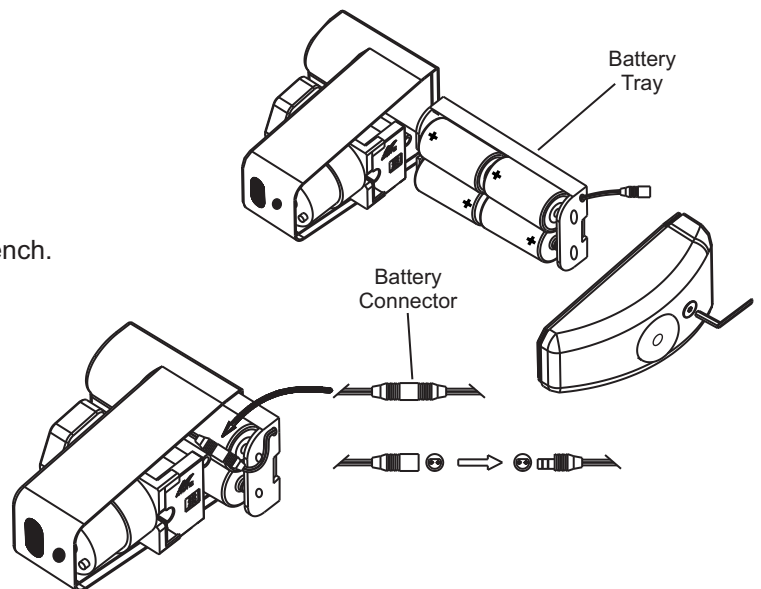
In **SENSOR Mode**, the unit sends out an infrared beam that senses a user on a urinal or toilet. Once the user walks away from the fixture the unit triggers the fixture to flush automatically. The unit includes an electronic push button to allow for a manual courtesy flush option.



# 4 Activation

**NOTE:** Four (4) "C" Cell batteries are factory installed inside the unit. The unit is shipped from factory with battery tray unplugged and must be plugged in to activate after desired flush mode is set.

- A - Remove side cover using supplied battery compartment wrench.
- B - Plug in battery connector. Unit will flush once.
- C - Reinstall side cover using battery compartment wrench.



# 5 Mode Operation and Features

## TIMER MODE (FOR URINAL USE ONLY)

1. Select switch sequence for preferred time interval.
2. Plug in battery connector (unit will flush once). Interval program will begin counting.
3. Unit is now activated.
4. Re-install battery cover.
5. The electronic push button on the front of the unit is deactivated in **TIMER MODE**.
6. The unit will only flush at the set time interval.
7. If a user is not detected within 135 minutes (2 Hours, 15 Minutes) of last use, the unit will go to "**SLEEP**".
8. When the unit goes to "**SLEEP**" it will flush once and discontinue counting the flush interval. The unit will stay dormant until the next user is sensed. Once a user is sensed the unit will "**WAKE UP**".
9. Once the unit "**WAKES UP**" it will flush once, reset the time interval, and resume counting.

The "**SLEEP**" feature is designed so that the unit does not flush after business hours and/or weekends if facility is closed and to allow for maximum water conservation.

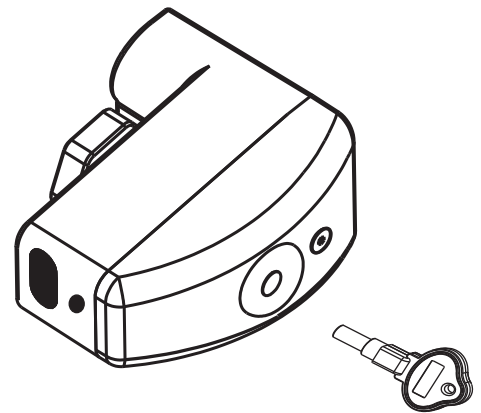
The unit includes a mechanical manual flush override.

To activate the mechanical manual flush override, simply insert the Manual Flush Key (included) into the slot located on the side of the unit and press until flush is activated.

### SUGGESTION:

The Manual Flush Key can be used to initiate a manual flush at any time. The key should be kept in a safe place or be attached to key chain of custodial staff for easy access.

**NOTE:** Activating mechanical manual flush override does not affect the time interval setting.



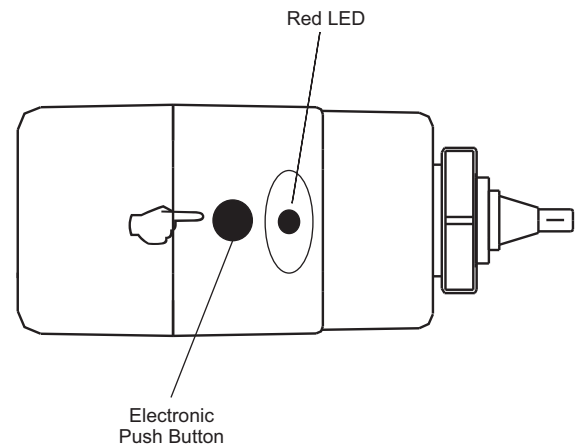
## SENSOR MODE (FOR URINAL OR TOILET USE)

1. Move Switch #1 into the **ON** position to activate **SENSOR MODE**.
2. Choose options using Switches #2 and #3.
3. Plug in battery connector (unit will flush once).
4. Unit is now activated.
5. Re-install battery cover.
6. Unit will flush after every use.
7. The electronic push button on the front of the unit can be used as a manual courtesy flush option.

## 6 Adjusting Sensor Distance (Must be done in **SENSOR MODE**)

- A - Press and hold electronic push button until you see a blinking red LED in sensor window (unit will flush once). Release electronic push button, wait one second, then press and release electronic push button once again. Unit will go into setup mode.
- B - While in setup mode, stand at desired distance (red LED will continuously blink as long as you are within the allowed sensor range).
- C - Remain at desired distance until red LED becomes solid (unit will flush once).

Sensor distance is now locked at the new setting.



## 7 Visual Indicator Guide

### Red LED

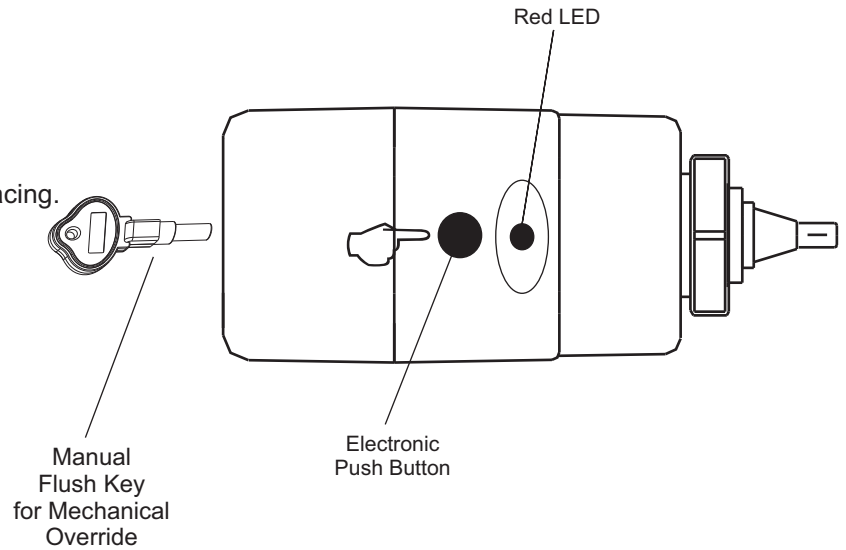
Constant blinking red LED indicates user being detected. Constant blinking red LED when user not present indicates batteries are low and need replacing.

### Electronic Push Button

Allows manual activation of flush when needed in **SENSOR MODE ONLY**.

### Mechanical Manual Flush Override

Allows the custodial staff (not the user) to flush the unit manually at any time with Manual Flush Key.

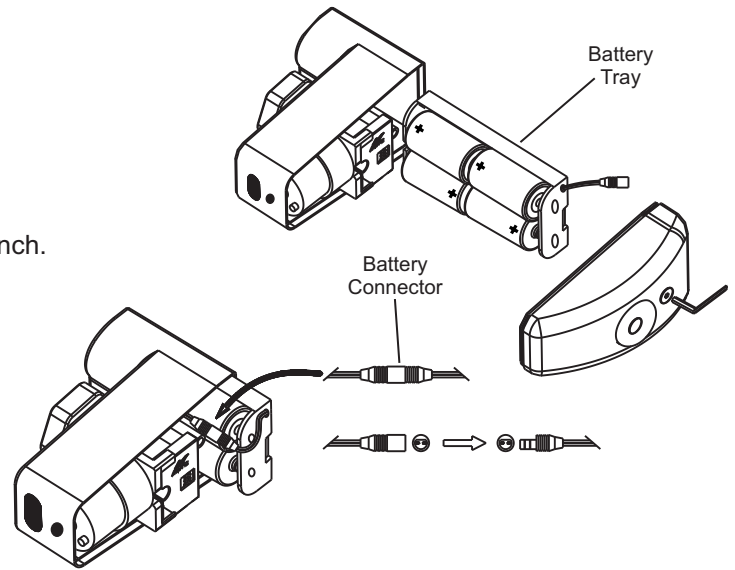


## 8 Battery Replacement

When batteries are low you will see a constant blinking red LED when user is not present.

To replace batteries:

- A** - Remove side cover using supplied battery compartment wrench.
- B** - Unplug battery connector and slide out battery tray.
- C** - Remove old batteries from tray and load new batteries (note position of batteries in tray).
- D** - Reinstall battery tray into unit and plug in battery connector.
- E** - Reinstall side cover using battery compartment wrench.



## Troubleshooting Guide

PROBLEM	CAUSE	SOLUTION
Fixture falsely activates.	Sensor distance may be set too far and registering the opposite wall or door as a user.	Adjust sensor distance (see STEP 6 "Adjusting Sensor Distance").
Constant blinking red LED when user NOT present.	Batteries need replacing.	Replace batteries (see STEP 8 "Battery Replacement").
Not enough water to fixture or too much water to fixture.	Diaphragm damaged. Valve control stop improperly adjusted.	Replace diaphragm. Adjust valve control stop.
Valve will not operate.	Sensor range may be set too close. Batteries are drained. Water supply is turned off. Relief valve (diaphragm plunger) is damaged.	Adjust sensor. Replace batteries. Turn water on. Replace relief valve (diaphragm plunger). If the unit does not begin to function, call customer service at 1-800-874-7822.
Valve does not shut off.	Dirt or debris preventing diaphragm from functioning properly.	Remove dirt or debris on diaphragm. Replace Diaphragm.
Valve does not flush even after sensor has been adjusted.	Batteries are drained.	Replace batteries. If the unit does not begin to function, call customer service at 1-800-874-7822.

# WARRANTY

AMTC WARRANTS ITS PRODUCTS TO BE FREE OF DEFECTS IN MATERIAL AND WORKMANSHIP FOR A PERIOD OF FIVE (5) YEARS FROM DATE OF PURCHASE, WHEN PROPERLY INSTALLED AND UNDER NORMAL USE AND SERVICE. THESE PROVISIONS DO NOT INCLUDE THE BATTERIES SHIPPED WITH THE PRODUCTS. A DEFECTIVE PRODUCT MAY BE RETURNED TO AMTC OR ITS AUTHORIZED REPRESENTATIVES WITHIN FIVE (5) YEARS FROM DATE OF PURCHASE WITH THE PROPER INVOICE OF PURCHASE. AMTC AT ITS DISCRETION WILL REPLACE OR REPAIR DEFECTIVE PRODUCT AT NO CHARGE. CLAIMS FOR LABOR, TRANSPORTATION, AND ANY OTHER INCIDENTAL COSTS WILL NOT BE ALLOWED. AMTC WILL NOT BE RESPONSIBLE FOR ANY CONSIDERABLE DAMAGES OF ANY KIND WHATSOEVER.

FOR TECHNICAL SUPPORT PLEASE CALL TOLL FREE 1-800-874-7822 OR VISIT OUR WEBSITE AT [WWW.AMTCORPORATION.COM](http://WWW.AMTCORPORATION.COM)

MAKE SURE TO VISIT OUR WEBSITE PERIODICALLY FOR INFORMATION ON NEW PRODUCTS AND TO DOWNLOAD ANY IMPORTANT PRODUCT DOCUMENTS THAT YOU MAY NEED IN THE FUTURE.



**Advanced Modern Technologies Corporation**

8367 Canoga Avenue, Canoga Park, CA 91304

Tel: (818) 883-2682 Toll Free (800) 874-7822 Fax: (818) 883-2620

[www.amtcorporation.com](http://www.amtcorporation.com)