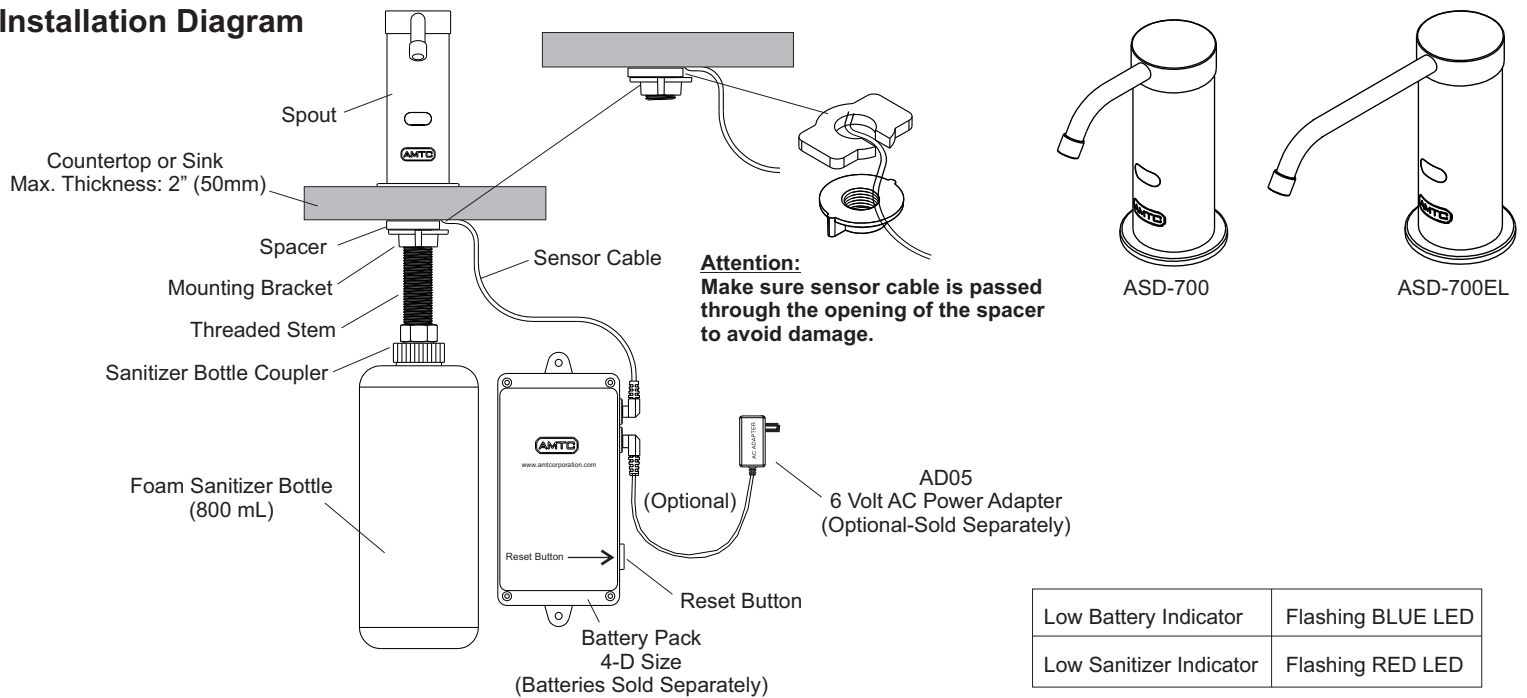




ASD-700 HY-GENIE™ AUTOMATIC FOAM SANITIZER DISPENSER INSTALLATION & OPERATION MANUAL

Installation Diagram

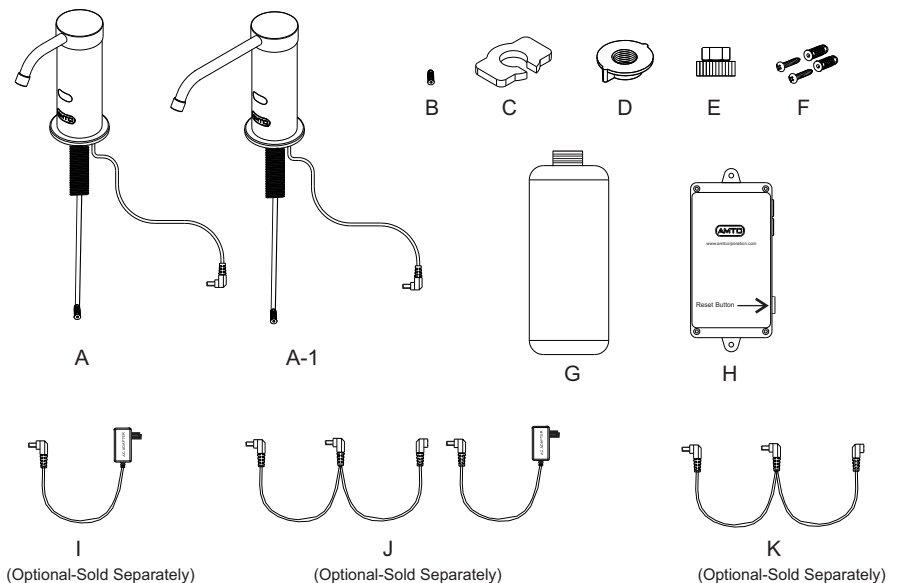


Installation Instructions (refer to installation diagram above)

1. If hole is not present drill a 1" (25.4mm) hole on countertop (refer to installation template on page 3).
 2. Mount the spout onto the countertop or sink and hand tighten mounting bracket and spacer without damaging sensor cable.
 3. Install batteries into battery pack and mount battery pack onto back wall using provided hardware (battery pack must be installed within 15" (380mm) of spout).
- Note: An optional 6 Volt AC power adapter (Part# AD05) can be purchased separately if electrical power is required.**
4. Screw sanitizer bottle coupler onto threaded stem and hand tighten.
 5. Fill up bottle with foam sanitizer.
 6. Screw sanitizer bottle onto sanitizer bottle coupler and hand tighten.
 7. Connect sensor cable onto battery pack (you will hear pumps and sanitizer will purge for approximately 5 seconds).
 8. Sanitizer dispenser is now ready for use.

Parts List

Ref #	Part #	Description
A	ASD-7SPT	Spout
A-1	ASD-7SPTTEL	EL Spout (6" Long)
B	ASD-7FA	Spout Filter Assembly
C	ASD-7SPA	Spacer
D	ASD-7MB	Mounting Bracket
E	ASD-7SBC	Sanitizer Bottle Coupler
F	ASD-7MSC	Mounting Screws
G	ASD-7SB	800ml Sanitizer Bottle
H	ASD-7BP	Battery Pack
I	AD05	6-Volt AC Power Adapter (Optional)
J	AD05-2	6-Volt AC Power Adapter w/Extension for 2 Devices
K	AD05-2-EXT	Extension Only for AC Power Adapter

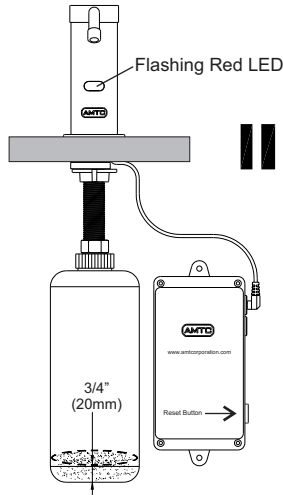




ASD-700 HY-GENIE™ AUTOMATIC FOAM SANITIZER DISPENSER INSTALLATION & OPERATION MANUAL

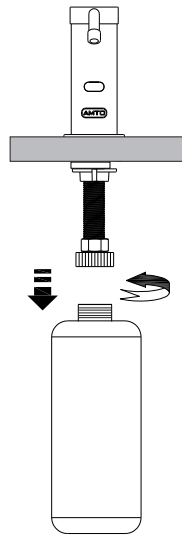
Sanitizer Refill Instructions:

1. Flashing Red LED Indicates Low Sanitizer

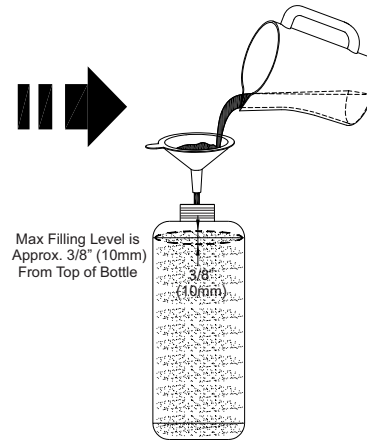


Refill Sanitizer When Sanitizer Level is Approx. 3/4" (20mm)

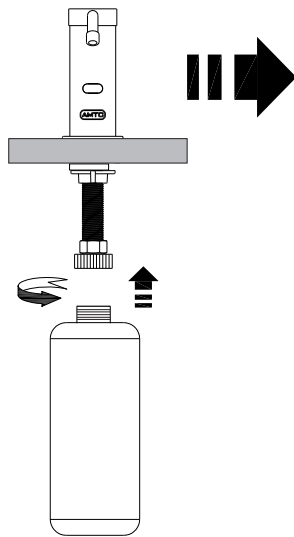
2. Unscrew Foam Sanitizer Bottle



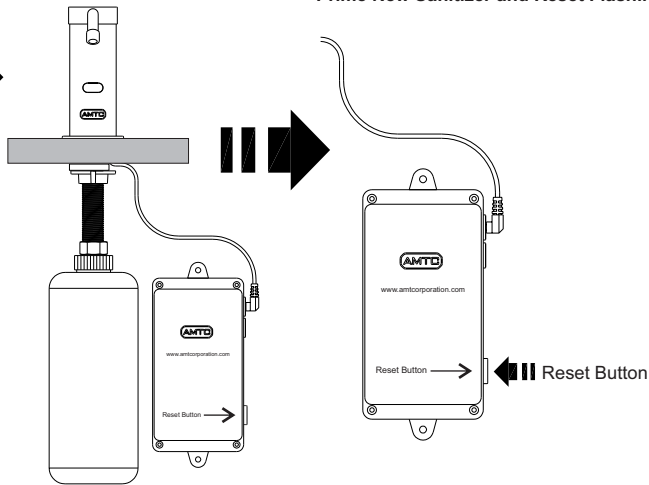
3. Refill Foam Sanitizer Bottle



4. Re-install Foam Sanitizer Bottle



5. Press and **Hold Reset Button for 7 Seconds** to Prime New Sanitizer and Reset Flashing Red LED.



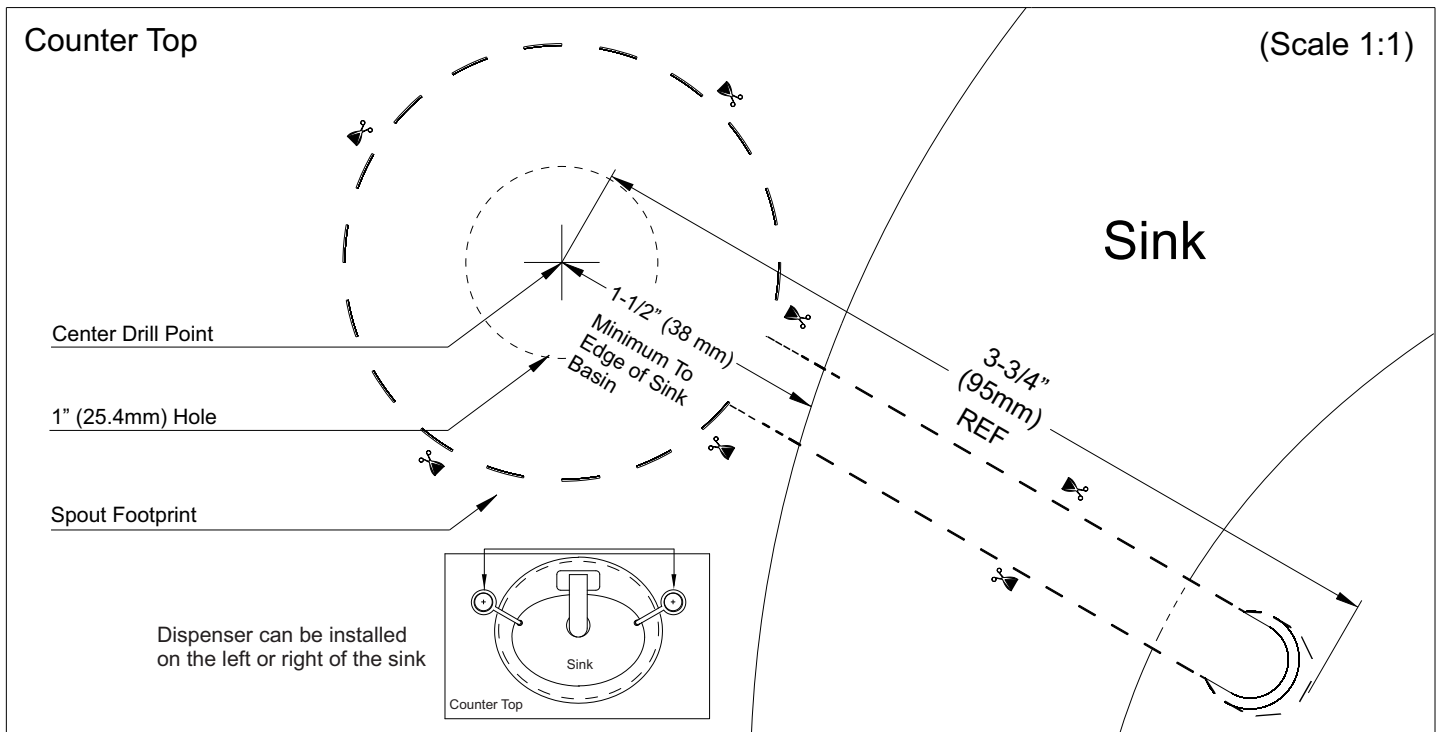
Troubleshooting:

Problem	Solution
Flashing BLUE LED	Batteries are low/drained. Replace all 4 batteries (D-size).
Flashing RED LED	Sanitizer is low or empty. Refill sanitizer bottle and press and hold reset button for 7 seconds to prime new sanitizer and reset LED.
Sanitizer does not come out of spout	Spout filter is dirty and won't pump sanitizer through the spout. Clean or replace spout filter assembly.
Sanitizer dispenses in liquid form and not foam	Wrong sanitizer was used and pump is dirty. Refill sanitizer bottle with water and press and hold reset button for 7 seconds to prime water through the unit. This should be repeated until only water dispenses and sanitizer is completely flushed out. Once unit is flushed out, refill sanitizer bottle with foaming sanitizer. Prime unit again until sanitizer comes out.



ASD-700 HY-GENIE™ AUTOMATIC FOAM SANITIZER DISPENSER INSTALLATION & OPERATION MANUAL

Installation Template for Model ASD-700 Spout (Not used for Model ASD-700EL)



Warranty

AMTC WARRANTS THE ASD-700 SANITIZER DISPENSER TO BE FREE OF DEFECTS IN MATERIAL AND WORKMANSHIP FOR A PERIOD OF THREE (3) YEARS FROM DATE OF PURCHASE, WHEN PROPERLY INSTALLED AND UNDER NORMAL USE AND SERVICE. THESE PROVISIONS DO NOT INCLUDE THE BATTERIES SHIPPED WITH THE PRODUCT. A DEFECTIVE PRODUCT MAY BE RETURNED TO AMTC OR ITS AUTHORIZED REPRESENTATIVES WITHIN THREE (3) YEARS FROM DATE OF PURCHASE WITH THE PROPER INVOICE OF PURCHASE. AMTC, AT ITS DISCRETION, WILL REPLACE OR REPAIR DEFECTIVE PRODUCT AT NO CHARGE. CLAIMS FOR LABOR, TRANSPORTATION, AND ANY OTHER INCIDENTAL COSTS WILL NOT BE ALLOWED. AMTC WILL NOT BE RESPONSIBLE FOR ANY CONSIDERABLE DAMAGES OF ANY KIND WHATSOEVER.

FOR TECHNICAL SUPPORT PLEASE CALL TOLL FREE 1-800-874-7822 OR VISIT OUR WEBSITE AT WWW.AMTCORPORATION.COM.

MAKE SURE TO VISIT OUR WEBSITE PERIODICALLY FOR INFORMATION ON NEW PRODUCTS AND TO DOWNLOAD ANY IMPORTANT PRODUCT DOCUMENTS THAT YOU MAY NEED IN THE FUTURE.



Advanced Modern Technologies Corporation

19800 Nordhoff Place, Chatsworth, CA 91311

Tel: (818) 883-2682 Toll Free: (800) 874-7822 Fax: (818) 883-2620

www.amtcorporation.com