



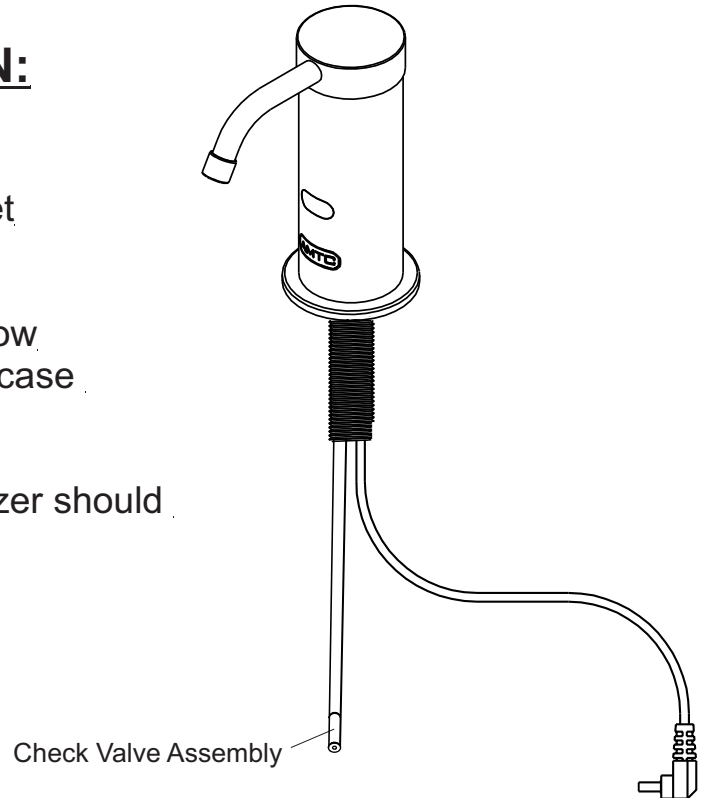
ASD-600 HY-GENIE[®] AUTOMATIC LIQUID SANITIZER DISPENSER INSTALLATION & OPERATION MANUAL

IMPORTANT PRE-INSTALLATION NOTE

READ BEFORE INSTALLATION:

During the initial installation you may need to prime the sanitizer 4-5 times to get the liquid to pump through the spout. In some cases there may be some trapped air in the system that does not allow the sanitizer to initially prime. If this is the case you will need to blow through the check valve assembly to clear the trapped air. Then prime the sanitizer again. The sanitizer should now prime through the spout.

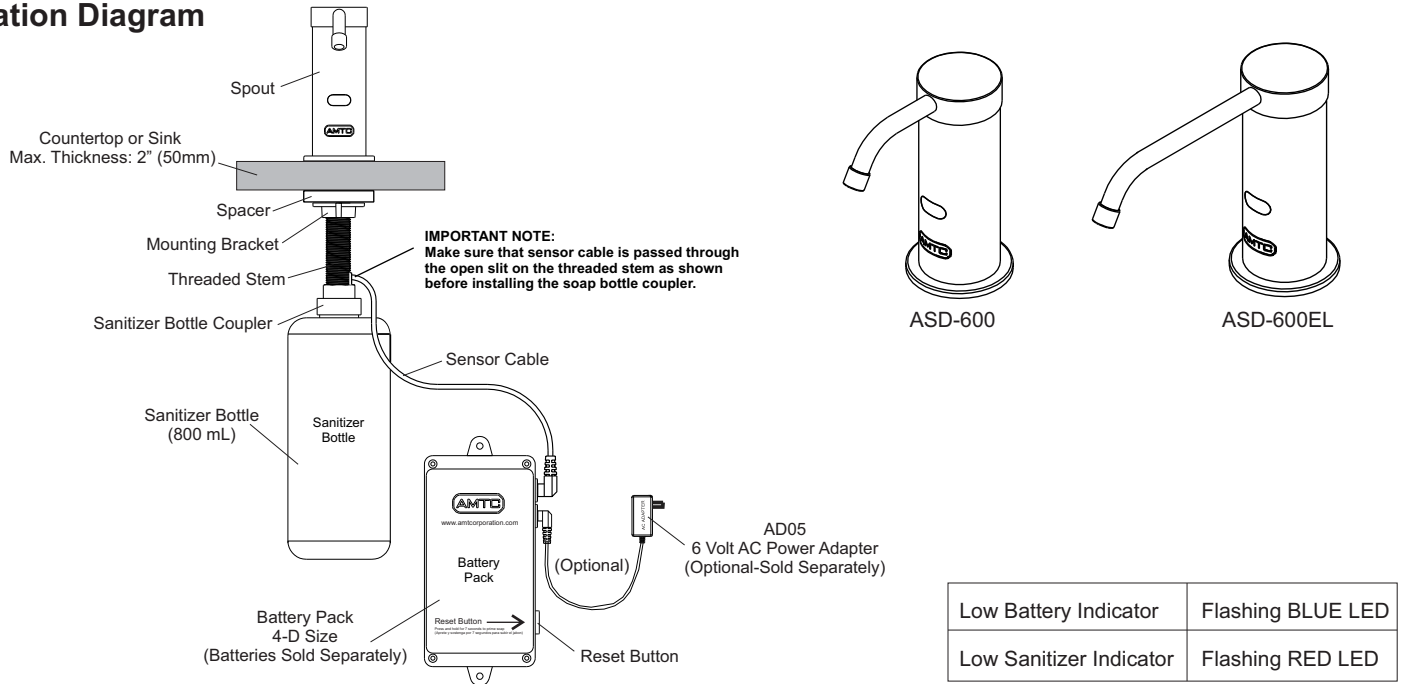
For further assistance please call Technical Support at 1-800-874-7822.





ASD-600 HY-GENIE[®] AUTOMATIC LIQUID SANITIZER DISPENSER INSTALLATION & OPERATION MANUAL

Installation Diagram

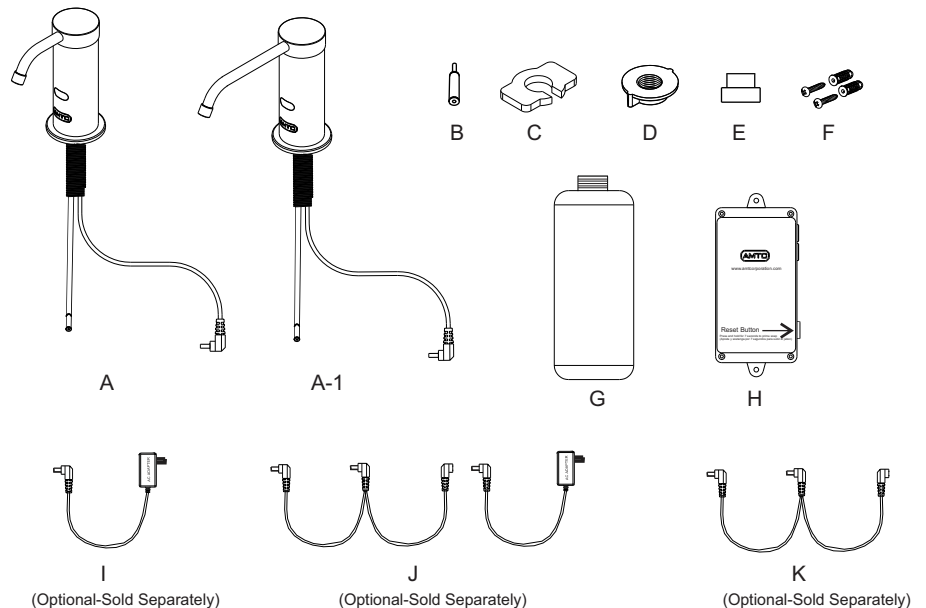


Installation Instructions (refer to installation diagram above)

1. If hole is not present drill a 1" (25.4mm) hole on countertop (refer to installation template on page 4).
 2. Mount the spout onto the countertop or sink and hand tighten mounting bracket and spacer.
 3. Install batteries into battery pack and mount battery pack onto back wall using provided hardware (battery pack must be installed within 15" (380mm) of spout).
- Note: An optional 6 Volt AC power adapter (Part# AD05) can be purchased separately if electrical power is required.**
4. Screw sanitizer bottle coupler onto threaded stem and hand tighten (position the sensor cable to come out the open slit of threaded stem).
 5. Fill up bottle with liquid or gel sanitizer.
 6. Screw sanitizer bottle onto sanitizer bottle coupler and hand tighten.
 7. Connect sensor cable onto battery pack (you will hear pump and sanitizer will purge for approximately 5 seconds).
 8. Sanitizer dispenser is now ready for use.

Parts List

Ref #	Part #	Description
A	ASD-6SPT	Spout
A-1	ASD-6SPTTEL	EL Spout (6" Long)
B	ASD-6FA	Check Valve Assembly
C	ASD-6SPA	Spacer
D	ASD-6MB	Mounting Bracket
E	ASD-6SBC	Sanitizer Bottle Coupler
F	ASD-6MSC	Mounting Screws
G	ASD-6SB	800ml Sanitizer Bottle
H	ASD-6BP	Battery Pack
I	AD05	6-Volt AC Power Adapter (Optional)
J	AD05-2	6-Volt AC Power Adapter w/Extension for 2 Devices
K	AD05-2-EXT	Extension Only for AC Power Adapter

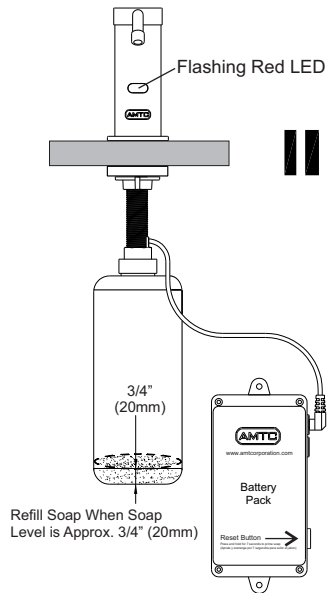




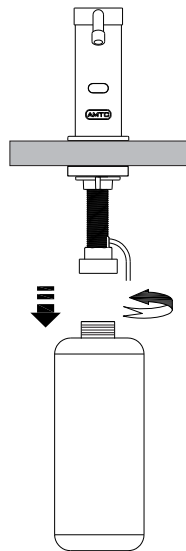
ASD-600 HY-GENIE[®] AUTOMATIC LIQUID SANITIZER DISPENSER INSTALLATION & OPERATION MANUAL

Sanitizer Refill Instructions:

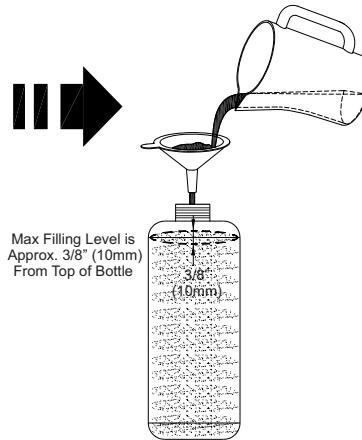
1. Flashing Red LED Indicates Low Sanitizer



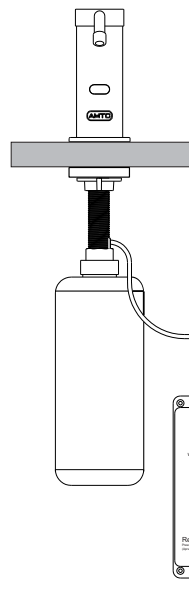
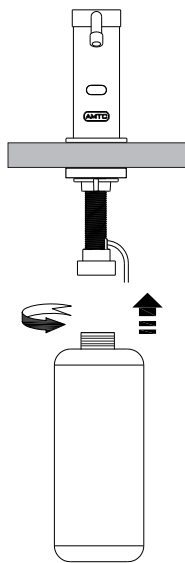
2. Unscrew Liquid Sanitizer Bottle



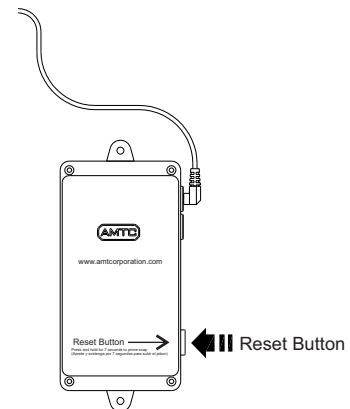
3. Refill Liquid Sanitizer Bottle



4. Re-install Liquid Sanitizer Bottle



5. Press and Hold Reset Button for 7 Seconds to Prime New Soap and Reset Flashing Red LED.



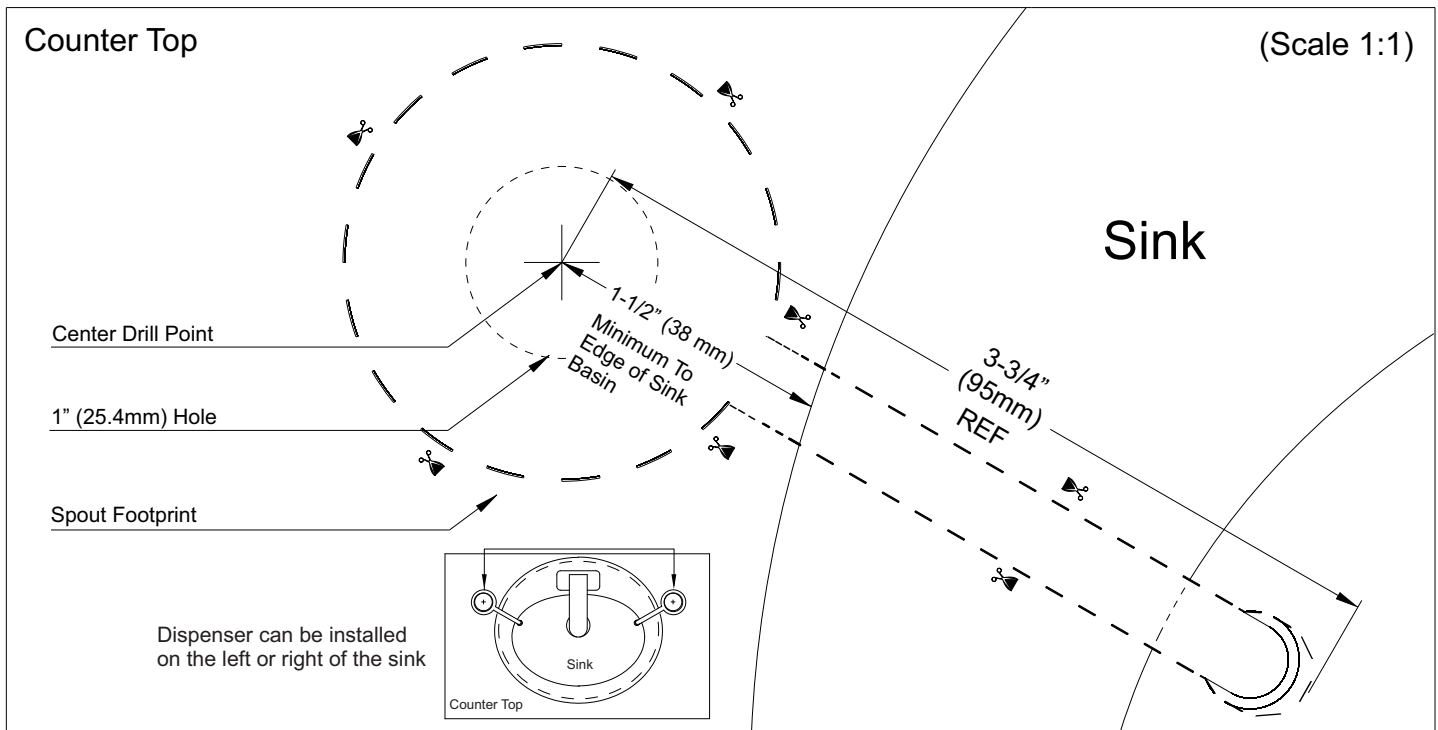
Troubleshooting:

Problem	Solution
Flashing BLUE LED	Batteries are low/drained. Replace all 4 batteries (D-size).
Flashing RED LED	Sanitizer is low or empty. Refill sanitizer bottle and press and hold reset button for 7 seconds to prime new sanitizer and reset LED.
Sanitizer does not come out of spout	Check valve assembly is dirty and won't pump sanitizer through the spout. Clean or replace check valve assembly.
Sanitizer dispenses very weak	Wrong sanitizer was used and pump is dirty. Refill sanitizer bottle with water and press and hold reset button for 7 seconds to prime water through the unit. This should be repeated until only water dispenses and sanitizer is completely flushed out. Once unit is flushed out, refill sanitizer bottle with liquid sanitizer. Prime unit again until sanitizer comes out.



ASD-600 HY-GENIE[®] AUTOMATIC LIQUID SANITIZER DISPENSER INSTALLATION & OPERATION MANUAL

Installation Template for Model ASD-600 Spout (Not used for Model ASD-600EL)



Warranty

AMTC WARRANTS THE ASD-600 SANITIZER DISPENSER TO BE FREE OF DEFECTS IN MATERIAL AND WORKMANSHIP FOR A PERIOD OF THREE (3) YEARS FROM DATE OF PURCHASE, WHEN PROPERLY INSTALLED AND UNDER NORMAL USE AND SERVICE. THESE PROVISIONS DO NOT INCLUDE THE BATTERIES SHIPPED WITH THE PRODUCT. A DEFECTIVE PRODUCT MAY BE RETURNED TO AMTC OR ITS AUTHORIZED REPRESENTATIVES WITHIN THREE (3) YEARS FROM DATE OF PURCHASE WITH THE PROPER INVOICE OF PURCHASE. AMTC, AT ITS DISCRETION, WILL REPLACE OR REPAIR DEFECTIVE PRODUCT AT NO CHARGE. CLAIMS FOR LABOR, TRANSPORTATION, AND ANY OTHER INCIDENTAL COSTS WILL NOT BE ALLOWED. AMTC WILL NOT BE RESPONSIBLE FOR ANY CONSIDERABLE DAMAGES OF ANY KIND WHATSOEVER.

FOR TECHNICAL SUPPORT PLEASE CALL TOLL FREE 1-800-874-7822 OR VISIT OUR WEBSITE AT WWW.AMTCORPORATION.COM.

MAKE SURE TO VISIT OUR WEBSITE PERIODICALLY FOR INFORMATION ON NEW PRODUCTS AND TO DOWNLOAD ANY IMPORTANT PRODUCT DOCUMENTS THAT YOU MAY NEED IN THE FUTURE.



Advanced Modern Technologies Corporation

8367 Canoga Avenue, Canoga Park, CA 91304

Tel: (818) 883-2682 Toll Free: (800) 874-7822 Fax: (818) 883-2620

www.amtcorporation.com